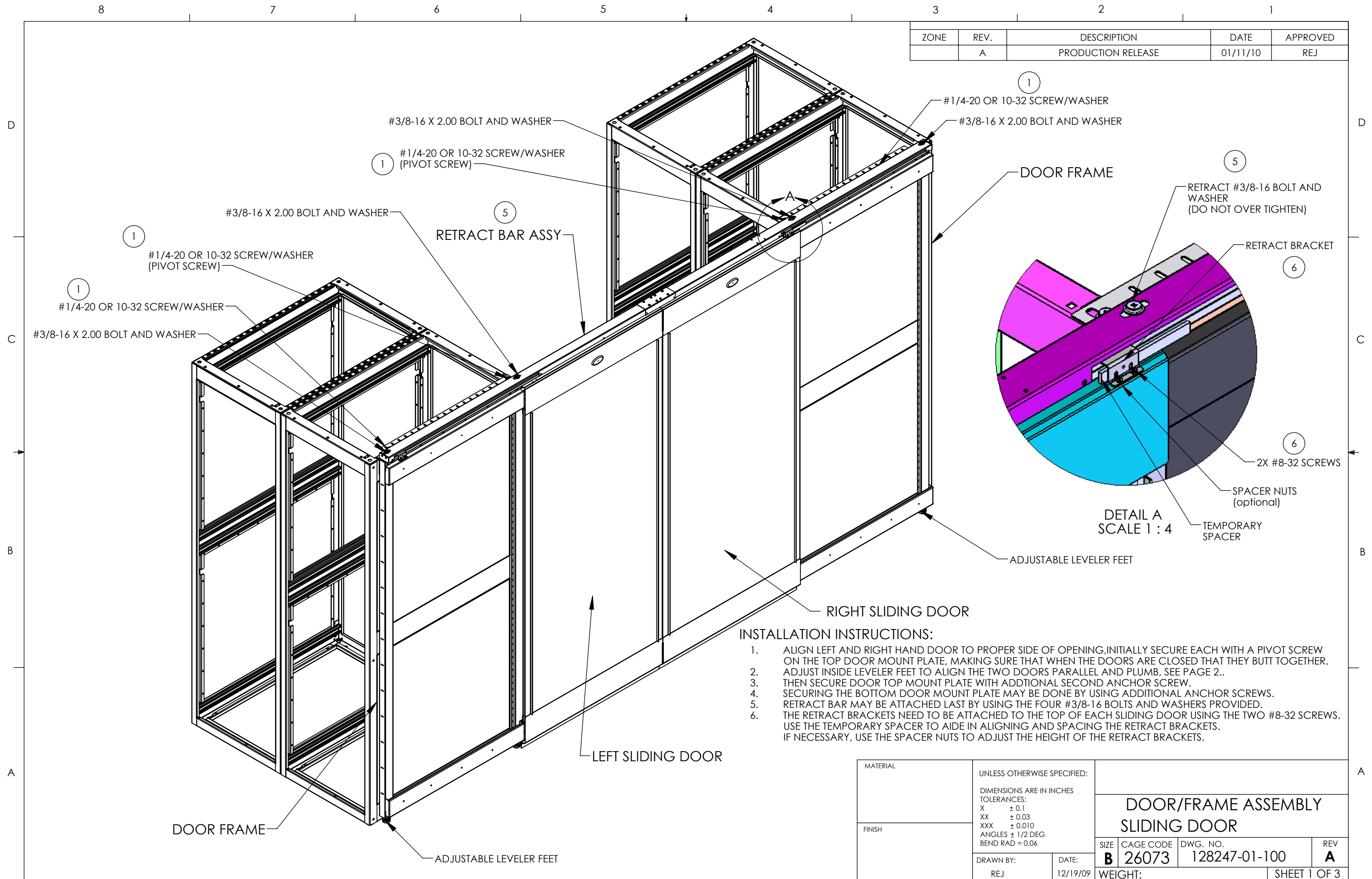


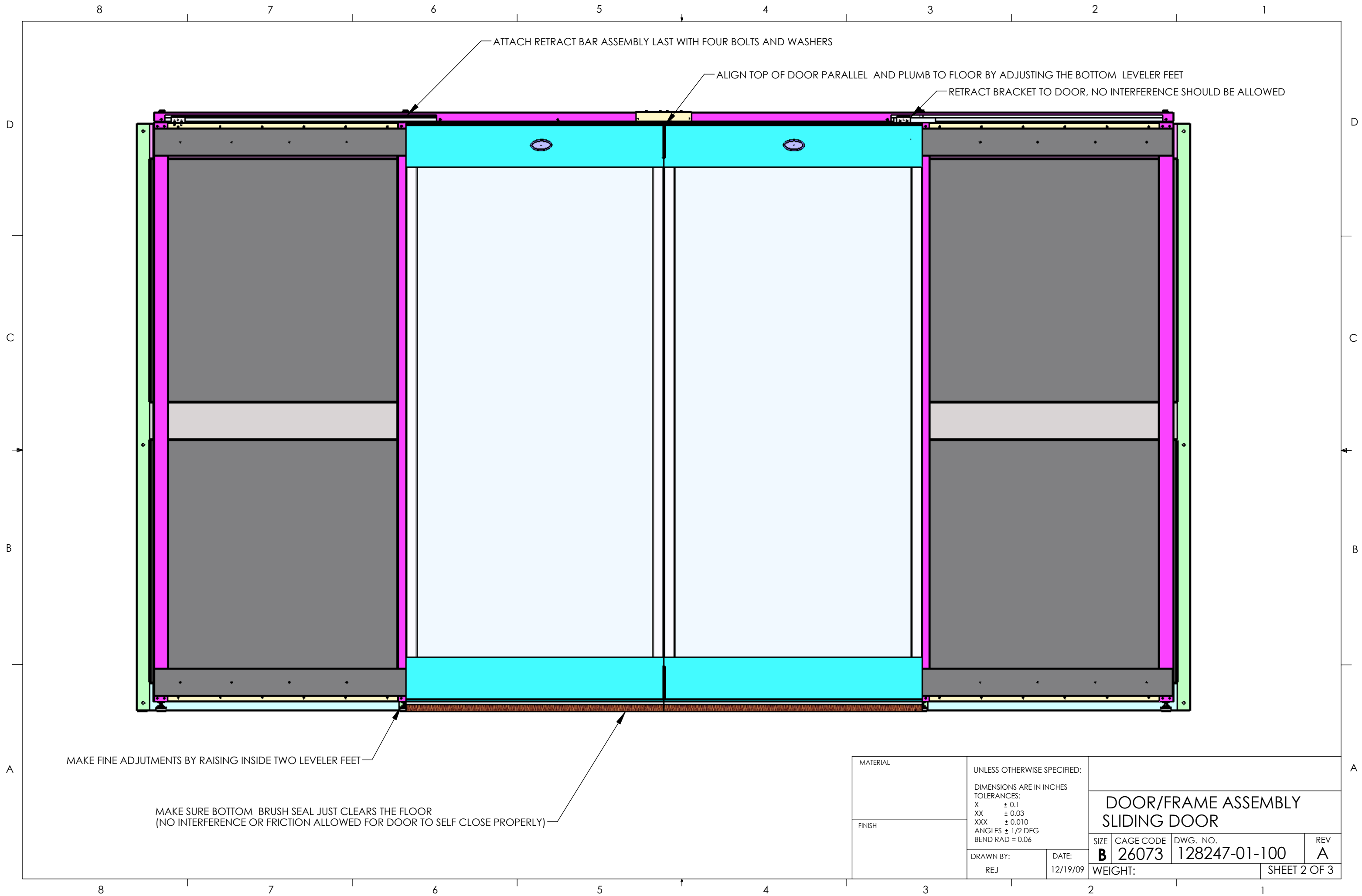
ZONE	REV.	DESCRIPTION	DATE	APPROVED
	A	PRODUCTION RELEASE	01/11/10	REJ



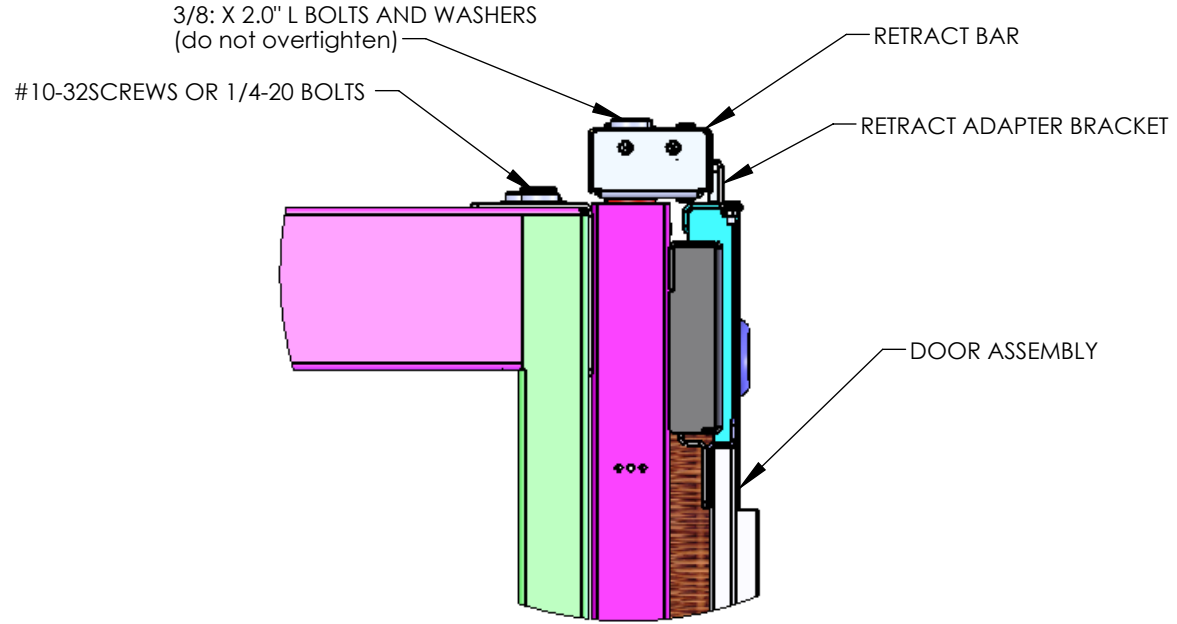
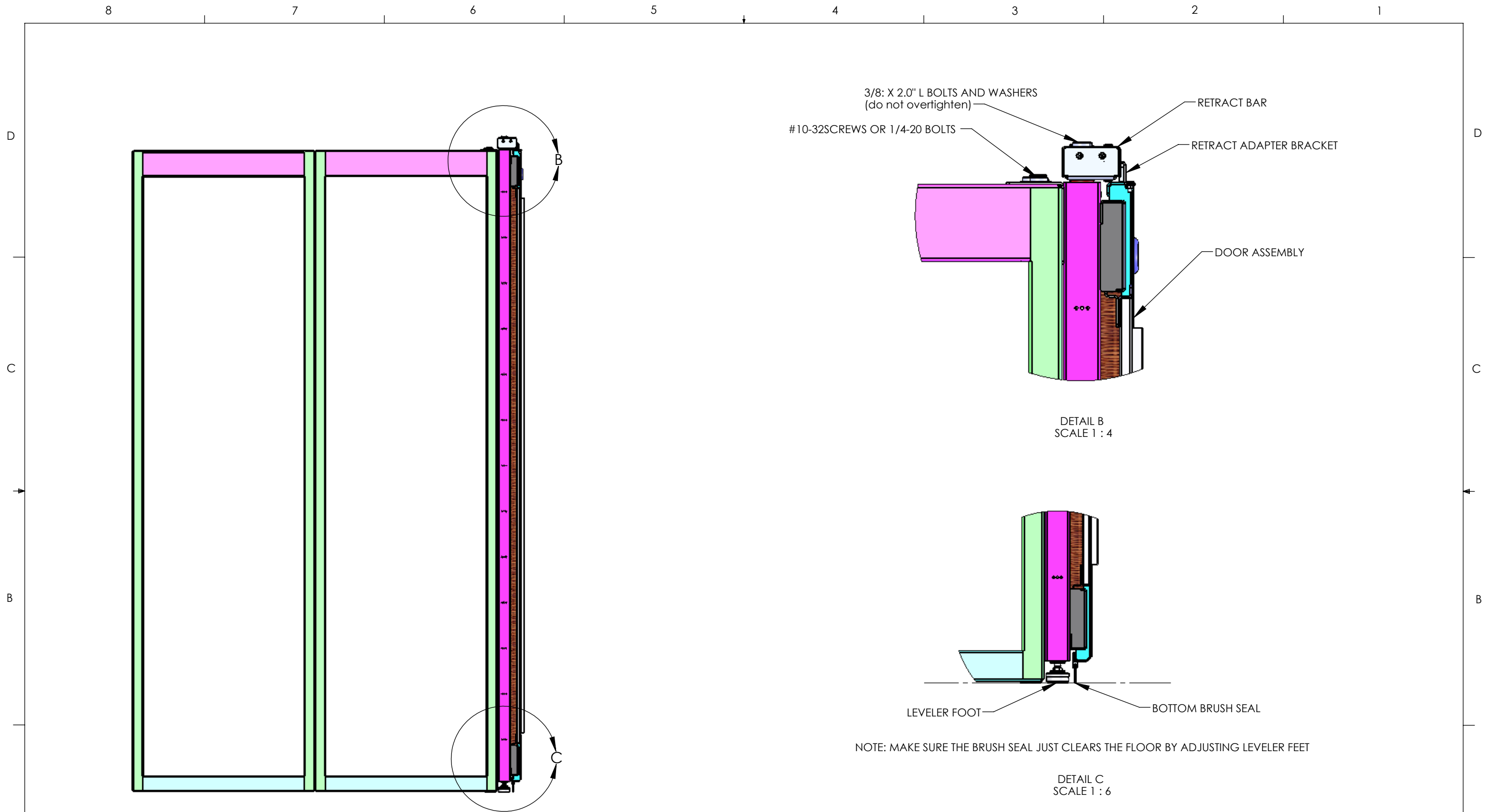
**INSTALLATION INSTRUCTIONS:**

1. ALIGN LEFT AND RIGHT HAND DOOR TO PROPER SIDE OF OPENING, INITIALLY SECURE EACH WITH A PIVOT SCREW ON THE TOP DOOR MOUNT PLATE, MAKING SURE THAT WHEN THE DOORS ARE CLOSED THAT THEY BUTT TOGETHER.
2. ADJUST INSIDE LEVELER FEET TO ALIGN THE TWO DOORS PARALLEL AND PLUMB, SEE PAGE 2..
3. THEN SECURE DOOR TOP MOUNT PLATE WITH ADDITIONAL SECOND ANCHOR SCREW.
4. SECURING THE BOTTOM DOOR MOUNT PLATE MAY BE DONE BY USING ADDITIONAL ANCHOR SCREWS.
5. RETRACT BAR MAY BE ATTACHED LAST BY USING THE FOUR #3/8-16 BOLTS AND WASHERS PROVIDED.
6. THE RETRACT BRACKETS NEED TO BE ATTACHED TO THE TOP OF EACH SLIDING DOOR USING THE TWO #8-32 SCREWS. USE THE TEMPORARY SPACER TO AIDE IN ALIGNING AND SPACING THE RETRACT BRACKETS. IF NECESSARY, USE THE SPACER NUTS TO ADJUST THE HEIGHT OF THE RETRACT BRACKETS.

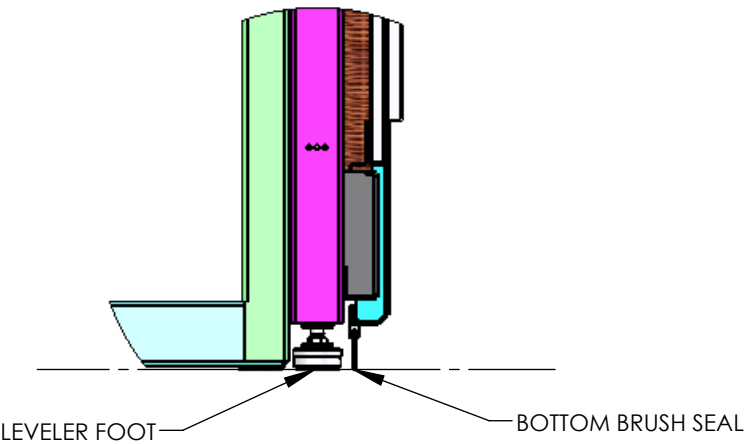
MATERIAL	UNLESS OTHERWISE SPECIFIED: DIMENSIONS ARE IN INCHES TOLERANCES: X ± 0.1 XX ± 0.03 XXX ± 0.010 ANGLES ± 1/2 DEG BEND RAD = 0.06		<b>DOOR/FRAME ASSEMBLY SLIDING DOOR</b>	
FINISH	SIZE <b>B</b>	CAGE CODE <b>26073</b>		
DRAWN BY: REJ		DATE: 12/19/09	WEIGHT:	
			SHEET 1 OF 3	



MATERIAL	UNLESS OTHERWISE SPECIFIED:		
FINISH	DIMENSIONS ARE IN INCHES		
	TOLERANCES: X ± 0.1 XX ± 0.03 XXX ± 0.010 ANGLES ± 1/2 DEG BEND RAD = 0.06		
DRAWN BY: REJ		DATE: 12/19/09	REV A
DOOR/FRAME ASSEMBLY SLIDING DOOR		SIZE <b>B</b>	CAGE CODE 26073
WEIGHT:		DWG. NO. 128247-01-100	SHEET 2 OF 3



DETAIL B  
SCALE 1 : 4



NOTE: MAKE SURE THE BRUSH SEAL JUST CLEARS THE FLOOR BY ADJUSTING LEVELER FEET

DETAIL C  
SCALE 1 : 6

MATERIAL	UNLESS OTHERWISE SPECIFIED:		DOOR/FRAME ASSEMBLY SLIDING DOOR	
FINISH	DIMENSIONS ARE IN INCHES TOLERANCES: X ± 0.1 XX ± 0.03 XXX ± 0.010 ANGLES ± 1/2 DEG BEND RAD = 0.06			
DRAWN BY: REJ		DATE: 12/19/09	SIZE <b>B</b>	CAGE CODE 26073
			DWG. NO. 128247-01-100	REV <b>A</b>
			WEIGHT:	SHEET 3 OF 3